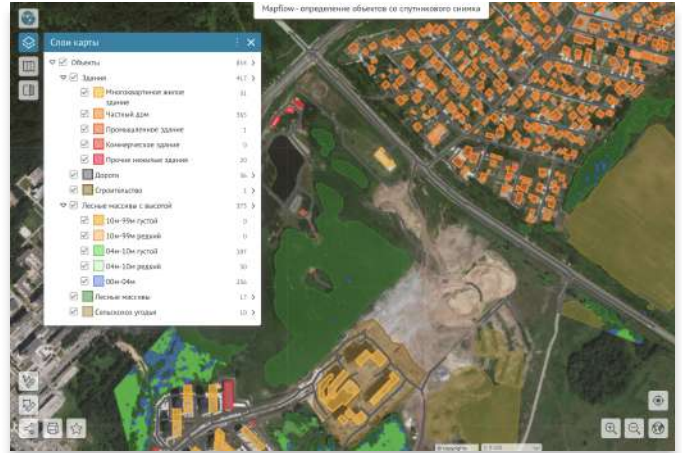


Mapflow API integration

Our partners from the leading Russian GIS company **Data East** implement Mapflow multimodal processings to expand the capabilities of their GIS platform. Using “Mapflow - object recognition in satellite images” it demonstrates how it can be used with interactive mapping tools. The processing using the Mapflow AI is launched and the results are obtained using geoprocessing tools of Data East CoGIS software.



Case study: **DATA EAST**



“ The Mapflow imagery processing is a demonstrative example of the possibility of integrating and expanding the capabilities of our platform using custom geoprocessing tools. In addition, these tools can be used in Model Builder with the CoGIS and Interactive Map tools in the toolbox.
 Vyacheslav Ananyev, CEO, Director General

CoGIS-Mapflow user scenario

After defining the coordinates of the recognition area, fill in the attributes that will be used as input parameters for the Mapflow processing service:

- Mapflow credentials
- Name and description of the recognition area for further work on the map with processed data
- Tile service when using your custom imagery data
- Mapflow model



Data access and provisioning

Mapflow service	Mapflow API, all models
Software	Data East, CoGIS platform
Data service	Maxar SecureWatch, Mapbox Satellite, Custom XYZ
Data formats	GeoJSON

Go to CoGIS demonstration map →

